



Marsham Street, Westminster
London SW1P

GARTONJONES.COM

Marsham Street, Westminster London, SW1P

GARTON JONES.COM

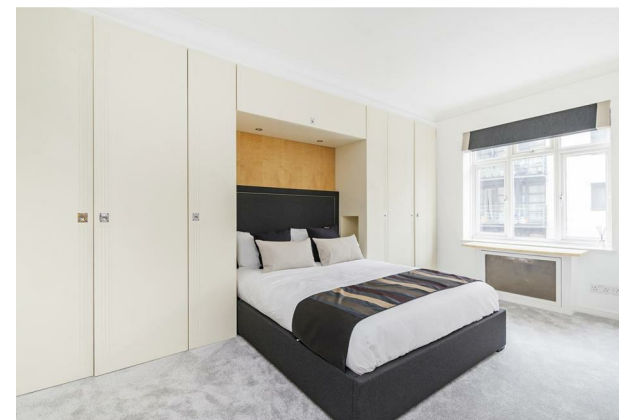
49 Marsham Street Lettings:
London +44 (0) 20 7340 0480
SW1P 3DP westminster@gartonjones.com
www.gartonjones.com

£807 Per Week

A beautifully presented bright and extremely spacious two bedroom apartment located on the 4th floor (lift) of this very well regarded period block situated in the heart of Westminster. The apartment offers a stylish furniture pack and living space comprises of a separate kitchen, a reception room and a dining area with doors leading onto a balcony. There are two double bedrooms with the master bedroom benefitting from an en-suite bathroom and there is a further shower room. Marsham Court offers a 24 hour concierge service and is just moments from St James Park, Victoria and Westminster Underground Station. There are numerous bus routes that pass along Marsham Street and Horseferry Road which provide regular services into the West End. Marsham Street is within walking distance to the shopping facilities of Victoria Street as well as The River Thames, Houses of Parliament and Tate Gallery which are all on the door step. Garton Jones are located on the same road so are readily available for viewings.

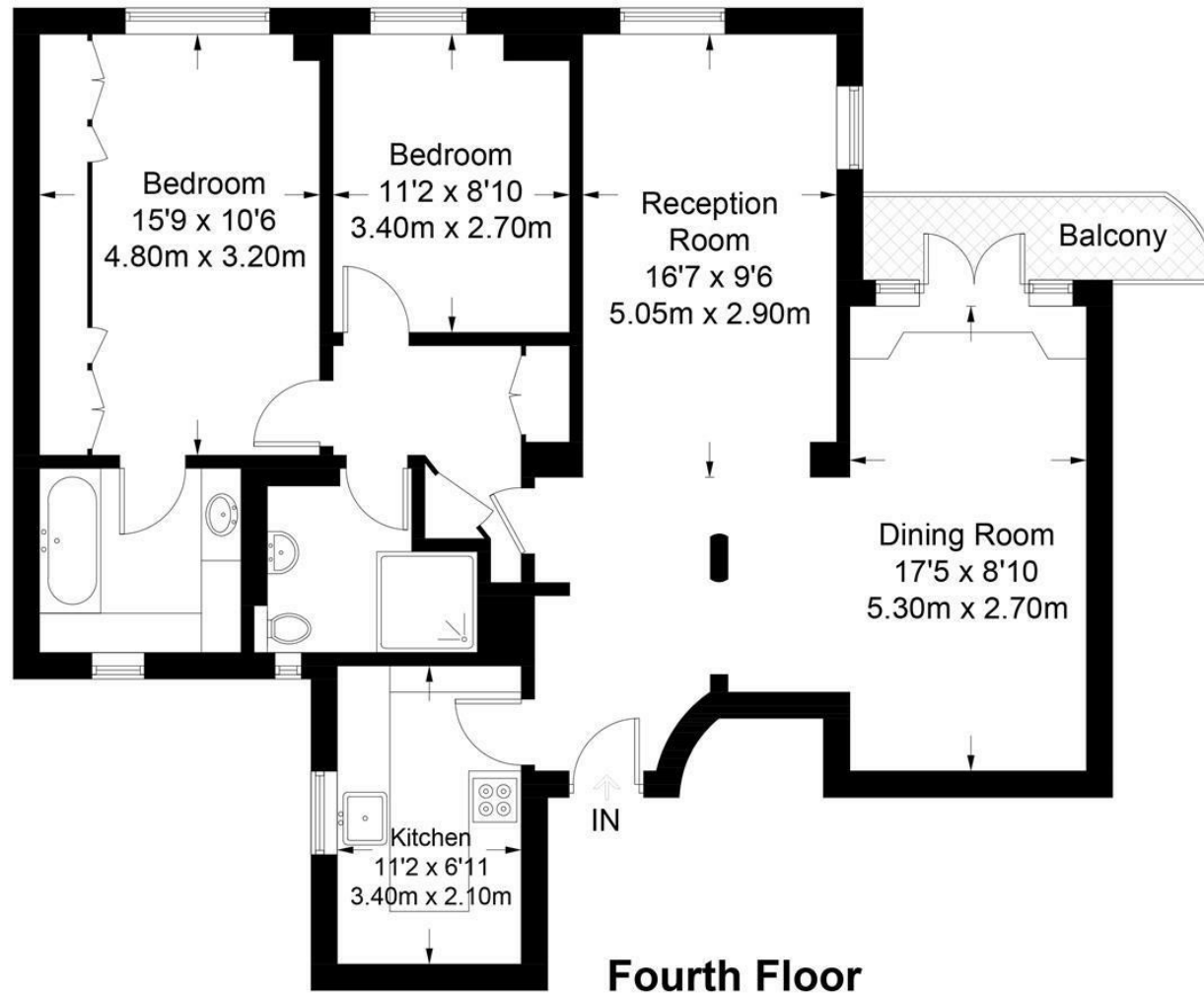
Minimum Term 12 Months
5 Weeks Security Deposit
Council Tax Band F (London Borough of Westminster)
EPC Rating: C (80)

- Beautifully Presented Larger Than Average Two Bedroom
- 970 Square Feet (90.01 Sq.M)
- 4th Floor (Lift)
- Reception Room
- Separate Integrated Kitchen
- 2 Bathrooms (En-Suite)
- 24 Hour Concierge
- Available: Immediately
- Close to Local Amenities Including Shops, Restaurants & Transport Links
- Walking Distance to Pimlico, St James' Park, Westminster and Victoria Station



Marsham Court

Approximate Gross Internal Area = 90.1 sq ft / 970 sq m



Not to scale, for guidance only and must not be relied upon as a statement of fact.
All measurements and areas are approximate only and have been prepared in accordance with the current edition of the RICS Code of Measuring Practice.

